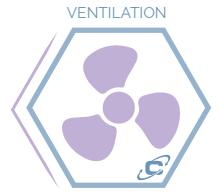
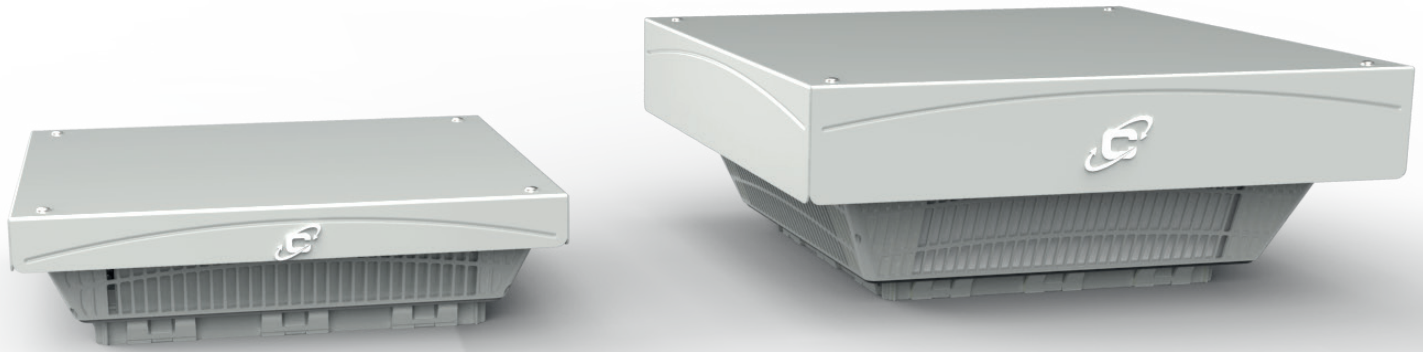


Roof-mounted for ventilation of electrical enclosures

KRYOS ROOF



The roof-mounted fans KryosROOF are the suitable ventilation solution for the hot air extraction from the roof. The compact dimensions allow the installation on several electrical panels, at the same time the layout and fans allow high air flows and efficiency.



New design, more flexibility

Together with a new design, the roof-mounted fans TSF/TSV offer compact dimensions and flexibility features, typical of the Cosmotec products.

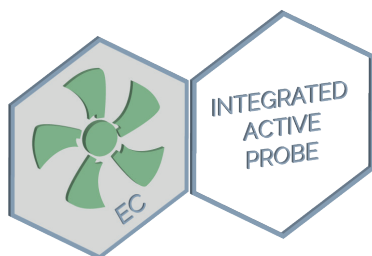
Sizes: 19, 22, 25, 35

Air Flow: da 500 m³/h a 1870 m³/h

PowerSupply: 230Vac e 115Vac. A richiesta 400/460Vac (solo CE)

Performance & Efficiency

The installed radial fans allow excellent air flow and minimal pressure losses in order to ensure a correct air flow inside the electrical enclosure. Moreover, it is available a new high efficiency **EC version with speed modulation by an active probe**, supplied as standard, it adjusts the fan speed reducing the power consumption and allow the optimal air flow in according the temperature inside the electrical panel. The power consumption can be reduced of 20/30% at the maximum working conditions.



Versions

TSF: version without fan

TSV: version with fan

	TSx19	TSx22	TSx25	TSx35
Dimensions [mm] (WxDxH)	395x395x108/112		490x490x188/191	
Cut-out Dimensions [mm]	291 x 291			
Air Flow [m ³ /h] 230V/60Hz	575/535	810/725	1520/1480	1870/1700
Air Flow [m ³ /h] EC fan + Active Probe	925/840	--	--	1870/1700
Sound Pressure TSV [dBA]	≤ 53	≤ 56	≤ 63	≤ 57

Temperature Range

TSF: -40 ... +60 °C

TSV: -25 ... +55 °C

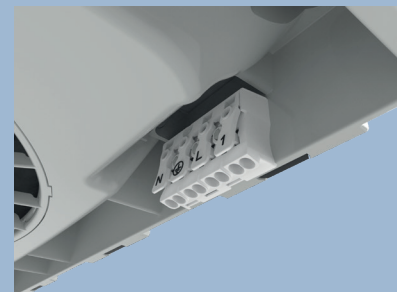


Easy & Safe Installation

KryosROOF can be easily installed **without tools and screws**, thanks to the clip on the base, that also give good grip with together the **gasket already installed**, between the KryosROOF and the electrical enclosure. The roof-mounted fans can be installed on different types of electrical enclosures with thickness from 0,8 to 3 mm. For higher thickness it is possible the fixing by screws.

There are **only two sizes and one cut-out** for all models, optimizing the installation process.

Easy and fast electrical connection by spring terminal.



Certifications

The roof-mounted fans KryosROOF got several certifications that make them suitable for the world market, decreasing the installation cost for the manufacturers of the electrical enclosures and accelerating market access for the end users.



Protection degree certified by an external agency

The integrated foam seal and the fixing clips guarantee a suitable seal between mounted-roof fan and the electrical enclosure, allowing protection against dust and splashing of water, with an **IP43 (Type1)** or **IP54 (Type12)** protection degree. **The tests are certified by an external agency**, who has so approved the protection degree.

Resistance



The top cover is made by galvanized sheet metal ensuring mechanical resistance. The base is made by ABS Blend, material that gives mechanical resistance, against the fire (with class V0) and to deterioration caused by sunshine rays, extending the product life.

Options

The KryosROOF are available with options special color RAL or stainless steel AISI 316 for top cover.

